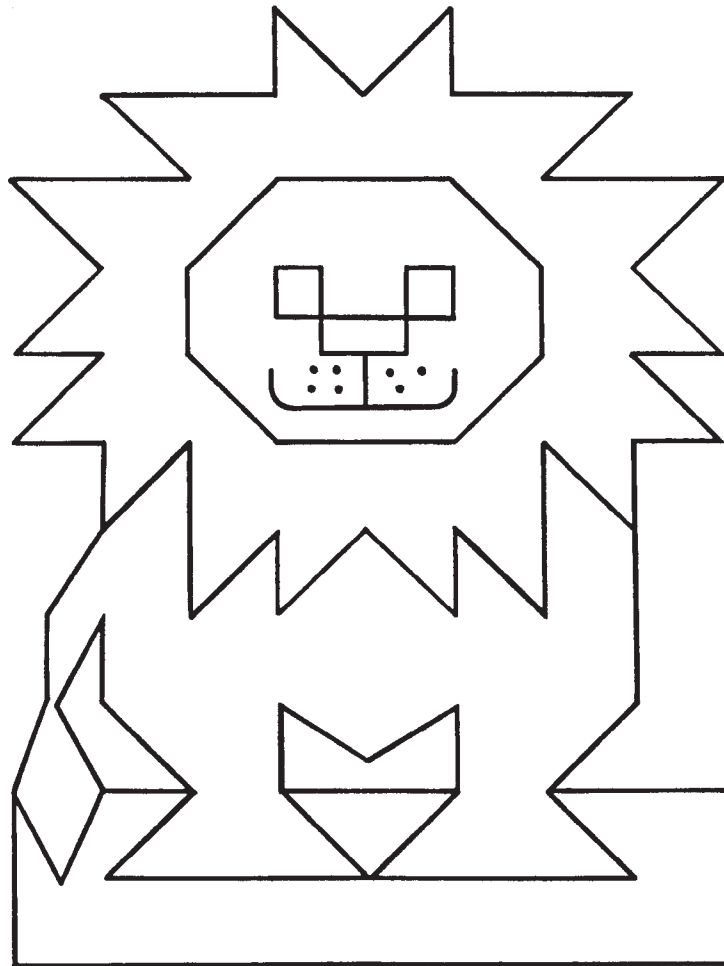


# CHALLENGING GRAPH ART

*by Erling and Dolores Freeberg*



*Teacher Created Resources, Inc.*

6421 Industry Way  
Westminster, CA 92683  
[www.teachercreated.com](http://www.teachercreated.com)

**ISBN: 978-1-55734-096-2**

©1997 *Teacher Created Resources, Inc.*

Reprinted, 2010

Made in U.S.A.

The classroom teacher may reproduce copies of materials in this book for classroom use only. The reproduction of any part for an entire school or school system is strictly prohibited. No part of this publication may be transmitted, stored, or recorded in any form without written permission from the publisher.

# TABLE OF CONTENTS

(Listed in approximate order of difficulty)

|  |      |
|--|------|
| Mystery Picture Directions . . . . .         | 3    |
| #1 Scottie Dog . . . . .                     | 4    |
| #2 Penguin . . . . .                         | 6    |
| #3 Whale . . . . .                           | 8    |
| #4 Panda Bear . . . . .                      | 10   |
| #5 School Bus . . . . .                      | ~ 12 |
| #6 Spaniel Dog . . . . .                     | 14   |
| #7 Bird . . . . .                            | 16   |
| #8 Boy . . . . .                             | 18   |
| #9 Girl . . . . .                            | 20   |
| #10 Baby Chick . . . . .                     | 22   |
| #11 Wormy Apple . . . . .                    | 24   |
| #12 Car . . . . .                            | 26   |
| #13 Snowman . . . . .                        | 28   |
| #14 Tulips . . . . .                         | 30   |
| #15 Funny Face . . . . .                     | 32   |
| #16 Lion . . . . .                           | 34   |
| #17 Triceratops . . . . .                    | 36   |
| #18 Race Car . . . . .                       | 38   |
| #19 Butterfly . . . . .                      | 40   |
| #20 Black Widow Spider . . . . .             | 42   |
| #21 Shark . . . . .                          | 44   |
| #22 Octopus . . . . .                        | 46   |
| Blank Graph Paper to be reproduced . . . . . | 48   |

# MYSTERY PICTURE DIRECTIONS


This graph art activity book is a compilation of pictures which are designed to fit graph paper squares. The child colors in the squares on graph paper according to directions on a direction sheet and a mystery picture appears.

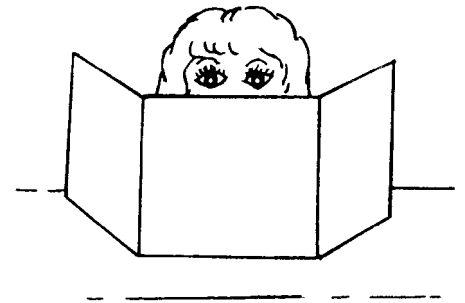
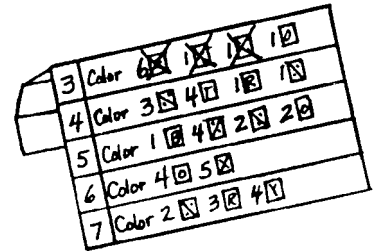
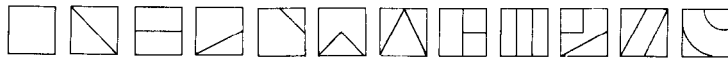
## OBJECTIVES

These activities will help a child improve on:

1. Learning how to read a graph
2. transferring a visual image
3. developing fine motor coordination
4. following specific directions
5. concentrating on a task

## DIRECTIONS

1. Each child is given a blank graph sheet page and a copy of a directions page (A reproducible graph sheet is at the back of this book).
2. The child should not see the answer key picture prior to doing the activity.
3. If the direction says: Color:  A6, C11, F2, the child follows up line A and across line 6 with his fingers until they meet in square A6. Then he colors that square half yellow and half orange as indicated on the color key; he does the same to the squares C11 and F2. He should cross out each letter number as he works. It is helpful to fold back the rows as he works in order to help keep his place.
4. The squares will vary from simple to more complex, i.e.



## HELPFUL TEACHING HINTS:

1. The teacher should first provide ample opportunity for the children to try out transferring different shapes on a practice graph paper. Since errors might be made on first attempts, extra graph sheets should be available.
2. Each child's paper should be hidden from others' view while working so that another child will not see the picture before he figures it out himself.
3. The finished product will be most attractive if the child:
  - a. colors solidly with crayons or marking pens
  - b. does not outline the squares
  - c. stays within the lines
  - d. blends together squares of the same color
4. Designs with the color white should be reproduced on manila paper so that the white will show.

### COLOR KEY:

|          |                  |               |          |
|----------|------------------|---------------|----------|
| R=Red    | YO=Yellow-orange | BG=Blue-green | T=Tan    |
| PK=Pink  | Y=Yellow         | B=Blue        | W=White  |
| F=Flesh  | G=Green          | LB=Light Blue | GY=Gray  |
| O=Orange | LG=Light Green   | BR=Brown      | BK=Black |

| <b>Mystery Picture #1</b> |                                 | <b>Color Key</b> | <b>BK = Black</b><br><b>R = Red</b> | <b>G = Green</b><br><b>GY = Gray</b> | <b>W = White</b> |
|---------------------------|---------------------------------|------------------|-------------------------------------|--------------------------------------|------------------|
| Color                     | <b>G</b> H6 H2 H5               |                  | <b>BK</b>                           | F10 D3 G6 E5 C6 D10                  |                  |
| Color                     | <b>BK</b> F9 C7 D5 D2 B3 G10    |                  | <b>R</b>                            | F4 G1 A2 B8 E11 A7                   |                  |
| Color                     | <b>R</b> F7 D11 A9 E1 G3 A1 F3  |                  | <b>G</b>                            | H8 H4 H9                             |                  |
| Color                     | <b>BK</b> E4 D1 E2              |                  | <b>BK</b><br><b>GY</b><br><b>W</b>  | <b>C3</b>                            | <b>C4</b>        |
| Color                     | <b>BK</b> G8 B11 G4 C1 B2       |                  | <b>BK</b>                           | D4 C10 E9 C5 D9 C9 E8                |                  |
| Color                     | <b>G</b> H11 H3 H1              |                  | <b>R</b><br><b>BK</b>               | A3 B4                                |                  |
| Color                     | <b>R</b> G11 F8 B6 A6 A5 F1 B7  |                  | <b>G</b>                            | H7 H10                               |                  |
| Color                     | <b>BK</b> G5 E7 C2 D8 E10 F6 G9 |                  | <b>R</b>                            | F11 A10 A4 B1 G2                     |                  |
| Color                     | <b>R</b> C11 E3                 |                  | <b>R</b><br><b>G</b>                | B5                                   |                  |
| Color                     | <b>R</b> F2 G7 A11 B9 B10 A8    |                  | <b>BK</b>                           | F5 E6 D6 C8 D7                       |                  |

